

PROJECT PROFILE: Petersfield Station SID020 HV feeder Renewals

PROJECT SPECIFICATIONS

Status	Completed
Started	Feb 2025
Completed	Apr 2025
Project Duration	2 Months
Client	Octavius
Location	Petersfield Station
SVR disciplines	HV Feeder route, Tarmacing, troughing, e -vac, winch cable pull



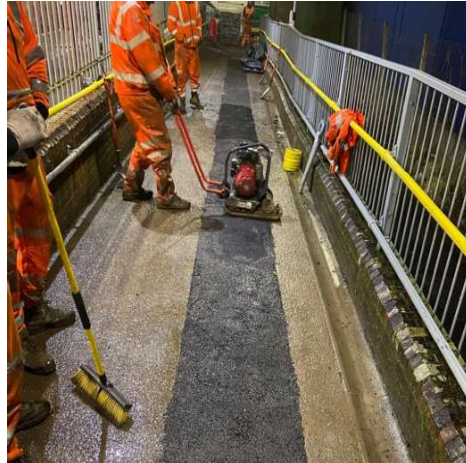
ABOUT THE PROJECT

As part of the CP& HV feeder renewals package 2 Sunville Rail were contracted by Octavius to install new Cubis and troughing route through Petersfield substation carpark towards substation and install HV cables and associated pilot and fibre into newly installed route.

Sunville Rail completed the following works;

- Suction ex-vac removal of spoil for new route
- Installation of new Cubis ducting route with Concrete and type 1 surround
- Installation of new troughing route to substation.
- Tarmac resurfacing in car park and station walkway ramp.
- Traffic management for on-site deliveries
- Supply of acoustic barriers to reduce noise whilst undertaking nighttime working in built up town area.
- Winched cable pull to install new HV cables and pilot, with associated fibre pulled by hand with newly pulled cable installed into cable containment route.
- Site clearance and environmental disposal.
- Roadsweeper clearance of carpark.

PROJECT PROFILE: Petersfield Station SID020 HV feeder Renewals



PROJECT PROFILE: Petersfield Station SID020 HV feeder Renewals



For more information
please contact

Paul Hayes
Managing Director
Sunville Rail Limited
paul.hayes@sunvillerrail.co.uk